

YOUR RIVERSIDE NEIGHBOURHOOD





YOUR YEERONGPILLY

Your new riverside neighbourhood.

There is more to life at Yeerongpilly Green, a place
where lifestyle flows effortlessly into your new home.



4105
Yeerongpilly Green
RIVERSIDE

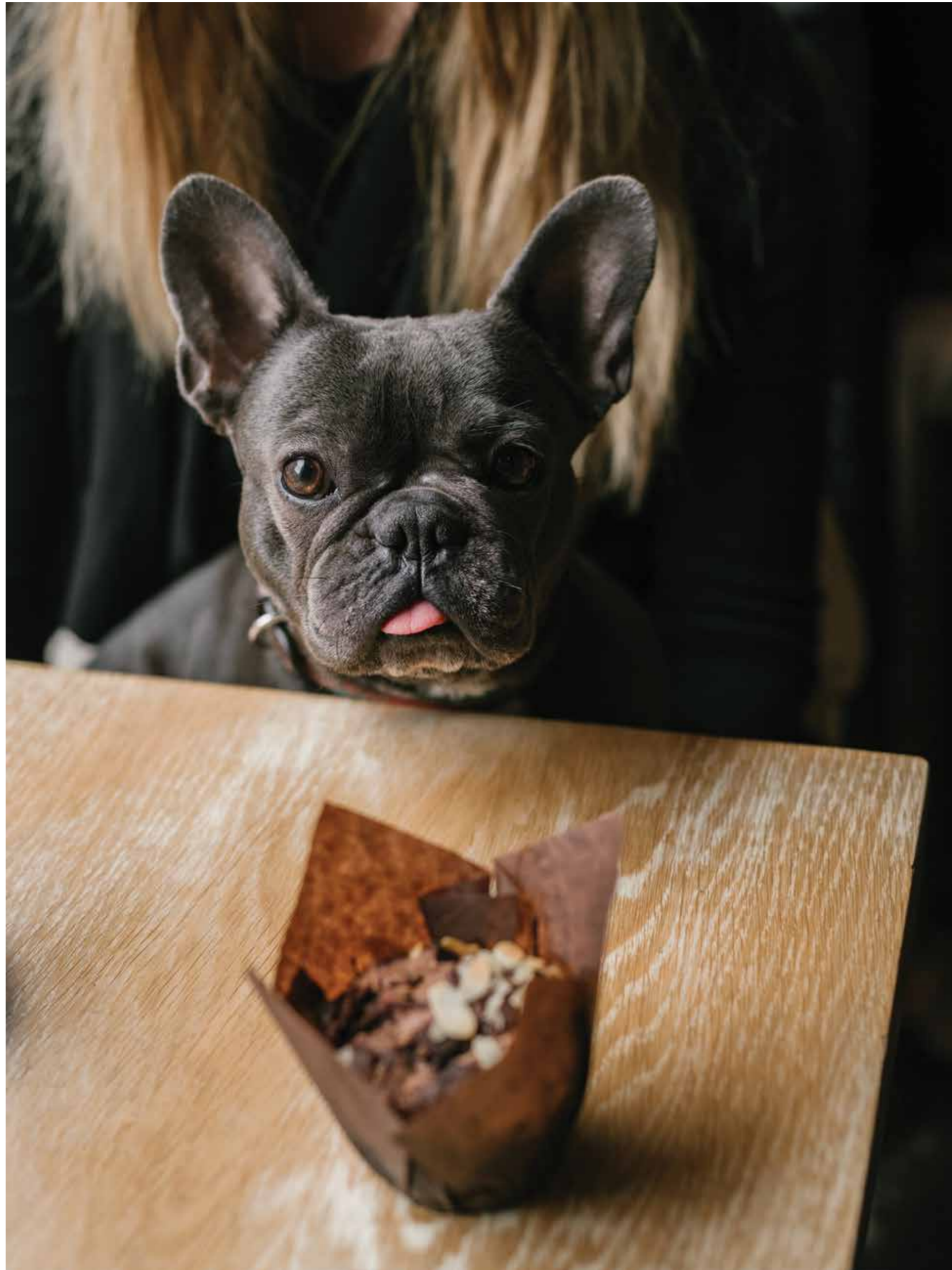


Your riverside life.

Love your home. Love your neighbourhood.
Set down roots in a real community that
will flourish and grow with you.





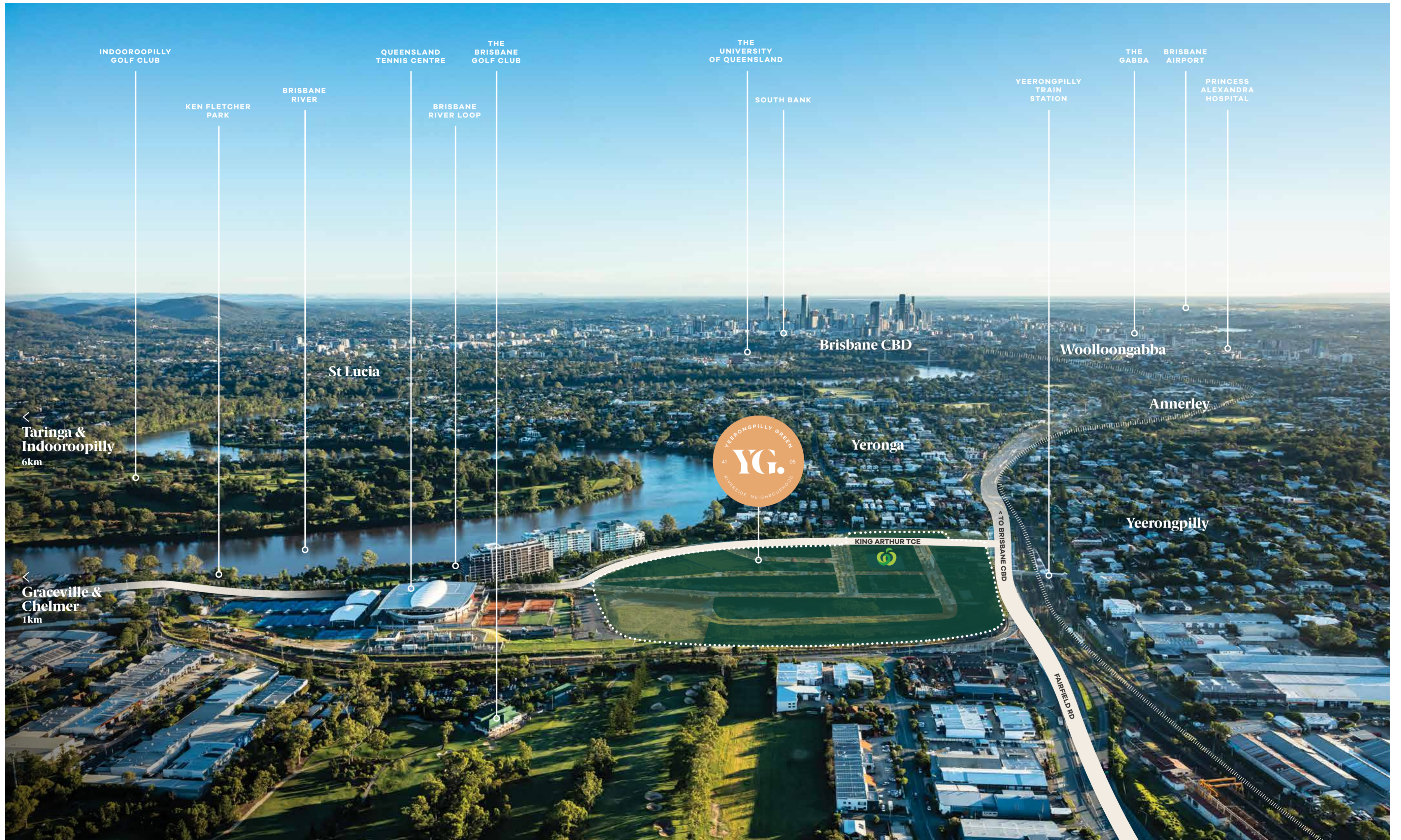


Your village life starts here.
A place for lovers of river walks,
the aroma of roasting coffee
and cool village vibes.

This special neighbourhood of generous apartments, uniquely designed terraces and Brisbane's newest village centre gives you more of everything you love, close to home.

The village centre brings the city to you with active retail, dining and commercial providers buzzing with workers and residents from 9-5 and beyond. Health and wellness facilities keep you feeling good, butchers and bakers keep you eating fresh, a full line Woolworths Supermarket, curated restaurants and cafés make trying something new an everyday delight.

Yeerongpilly Green weaves together beautifully considered homes, preserved and regenerated historical buildings, peaceful parks and remarkable village retail, just paces from the river.





Your new neighbourhood

Down by the river with Brisbane's CBD in your sights, this masterplanned riverside precinct is much more than the sum of its parts. Sitting amongst 1.8 hectares of landscaped parks and boulevards, it offers a thriving retail precinct with an array of cafés, restaurants and speciality stores including a Woolworths. A place where you can live, work and play.

This new urban village hosts spacious, north-facing apartments and terraces set amongst lush greenery and a lively social scene. The southside has not seen a project like this before – a home, retail and business precinct worth discovering.

Riverside Residences

- Park House
- Garden House
- Green Terraces
- Urban House
- Future Residential

Riverside Village

- Heritage
- Retail
- Commercial

- ⊕ Resident's Pool
- ⊕ Village Green
- ⊕ Woolworths
- ⊕ Yeerongpilly Station
- ⊕ Brisbane River



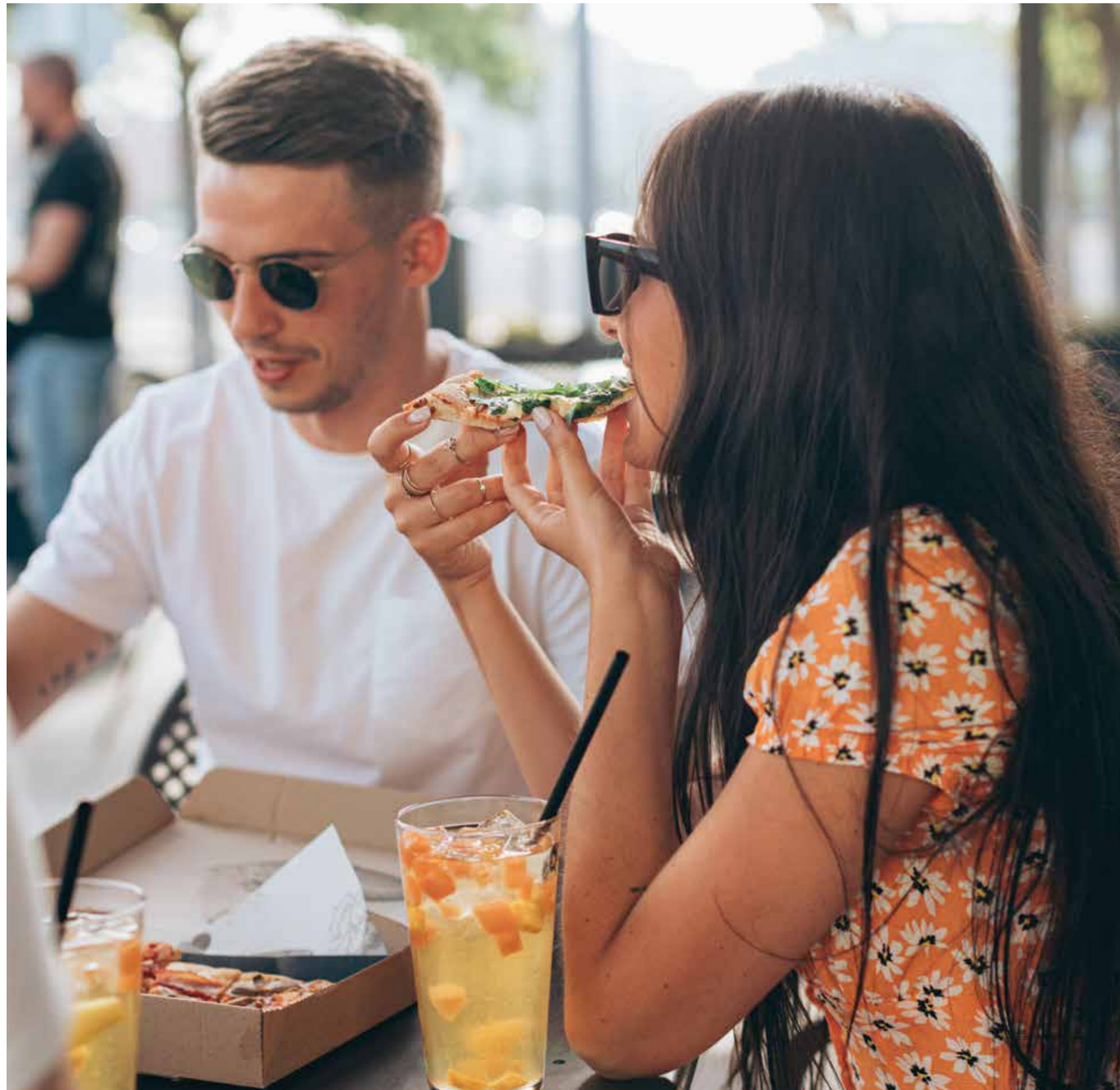
ARTIST IMPRESSION

Your riverside village.

Find a home that extends beyond
your front door at Yeerongpilly Green.
A place that brings the whole community together.



Your appetite for local culture and fresh flavours can be indulged around any corner.



Catch the ebb and flow of life at Yeerongpilly Green. It's a new home for eateries, vibrant café culture and everyday convenience, bordered by lush parkland and riverside landscapes. Enjoy a feast of good food, fresh tastes, piping hot espresso and cool cocktails. A place unique in spirit and character.

Step out your front door and you're seamlessly connected to village life with inviting places to eat, browse and linger. The new village centre with its social, shopping and eating scene is precision planned to help you enjoy life to the full.





Your thriving new neighbourhood captures all the best of city river life.



A dynamic culinary, retail and creative culture is flourishing out from the CBD, focused in and around the riverbanks. Reacquaint yourself with nature on morning strolls and afternoon picnics. Find hubs for artistic pursuits and entrepreneurial endeavour where established businesses thrive alongside art galleries and destination foodie haunts.

All around waves of rejuvenation are sweeping the precinct, with Yeerongpilly Green playing a new starring role. Clear your head with walks along the river banks or open your mind at a cultural event. The day is yours to create and shape in any way you choose.





Yeerongpilly Green does wonders for your wellbeing. A place to get away and have it all.

Residents of this welcoming community have ample green spaces to meet, lounge and gather. The Village Green provides open green space for an early morning stroll, afternoon picnics or an evening swim in your new boutique neighbourhood.

For a change of scenery, it's a short walk through parks and tree-lined paths down to the Brisbane River. Immersed in greenery, Yeerongpilly Green is a genuine neighbourhood where people will feel at home.



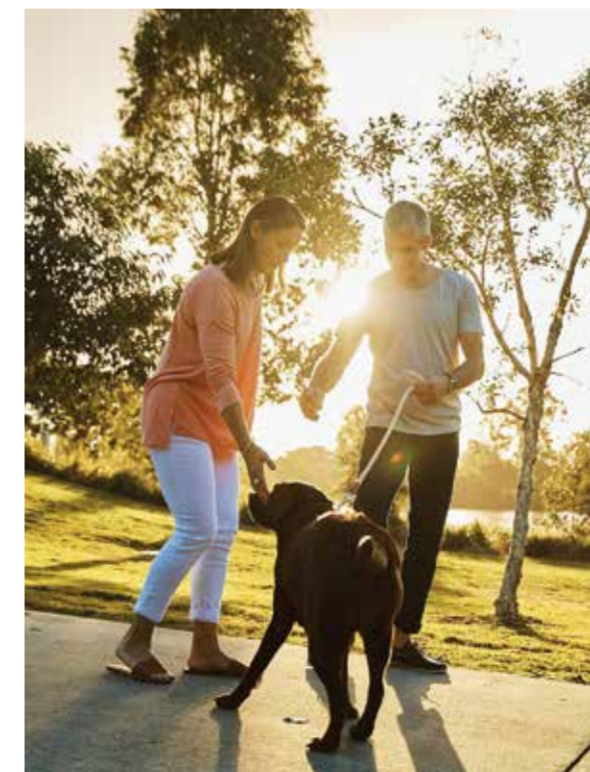
ARTIST IMPRESSION

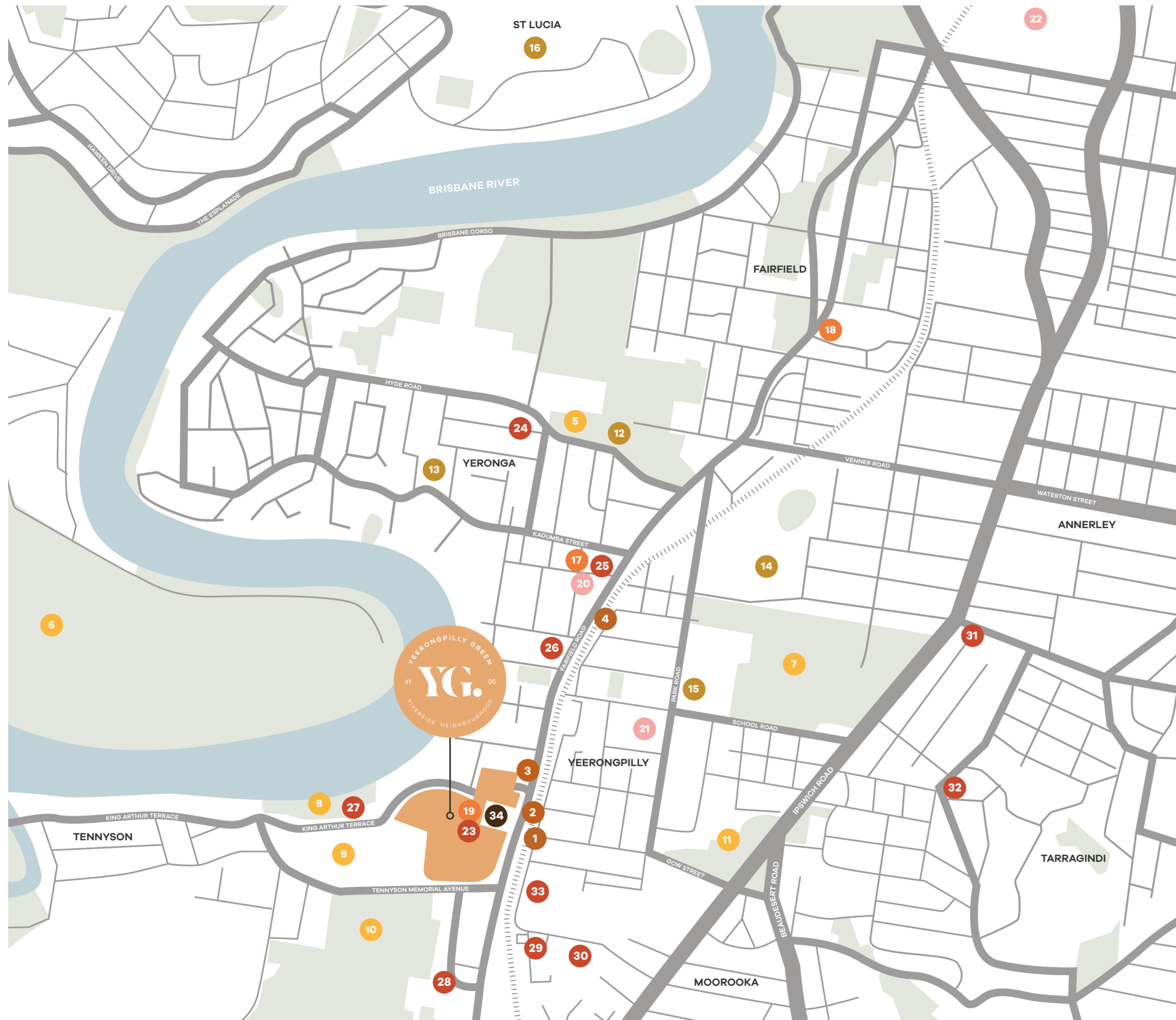
Bright minds, better futures and seamless liveability and connectivity.

Proximity to top-notch education is sure to spark young minds and shape brighter futures. Plus, a safe, walkable neighbourhood and great public transport means you and your family can simply stroll or hop on the train to school – adding bonus time back to your busy working day.

For adult learning, Griffith University and The University of Queensland are both less than 20 minutes' drive – making higher education options accessible. With pathways to learning in every direction, you're set up for all ages and stages of life.

As part of the Cross River Rail project, Yeerongpilly station is set to receive beneficial upgrades to significantly improve access and functionality. Access to public transport, easy commutes and education makes Yeerongpilly Green a wise choice.





Positioned for success with everything at your doorstep.

Transport

- 1. Yeerongpilly Station
- 2. Fairfield Rd Yeerongpilly station bus stop
- 3. Fairfield Rd at Ortive St bus stop (stop 33)
- 4. Yeronga Station

Outdoor & Recreation

- 5. Yeronga Off Leash Dog Park
- 6. Indooroopilly Golf Club
- 7. Yeronga Park Pool
- 8. Ken Fletcher Park
- 9. Queensland Tennis Centre
- 10. The Brisbane Golf Club
- 11. Moorooka Lions Bicentennial Picnic Ground

Education

- 12. Yeronga Hyde Road Kindergarten & Pre School Society Inc.
- 13. St Sebastian's Primary School
- 14. Yeronga State High School
- 15. Yeronga State School
- 16. University of Queensland

Shopping

- 17. The Yeronga Village
- 18. Fairfield Gardens
- 19. YG Shopping Centre

Medical

- 20. Yeronga Medical Centre
- 21. Yeronga Park Dental
- 22. Princess Alexandra Hospital

Food & Beverage

- 23. YG Village Cafes
- 24. Pizzeria 1760
- 25. Chompers Chippy & Takeaway
- 26. Subway Yeronga
- 27. River La Vie
- 28. Helios Brewing Company
- 29. Station Road Café
- 30. Andonis Café & Bar
- 31. Café O'Mai
- 32. Billy Kart Kitchen
- 33. Slipstream Brewery

Employment

- 34. Brisbane City Council Regional Business Centre + The Institute co-working space







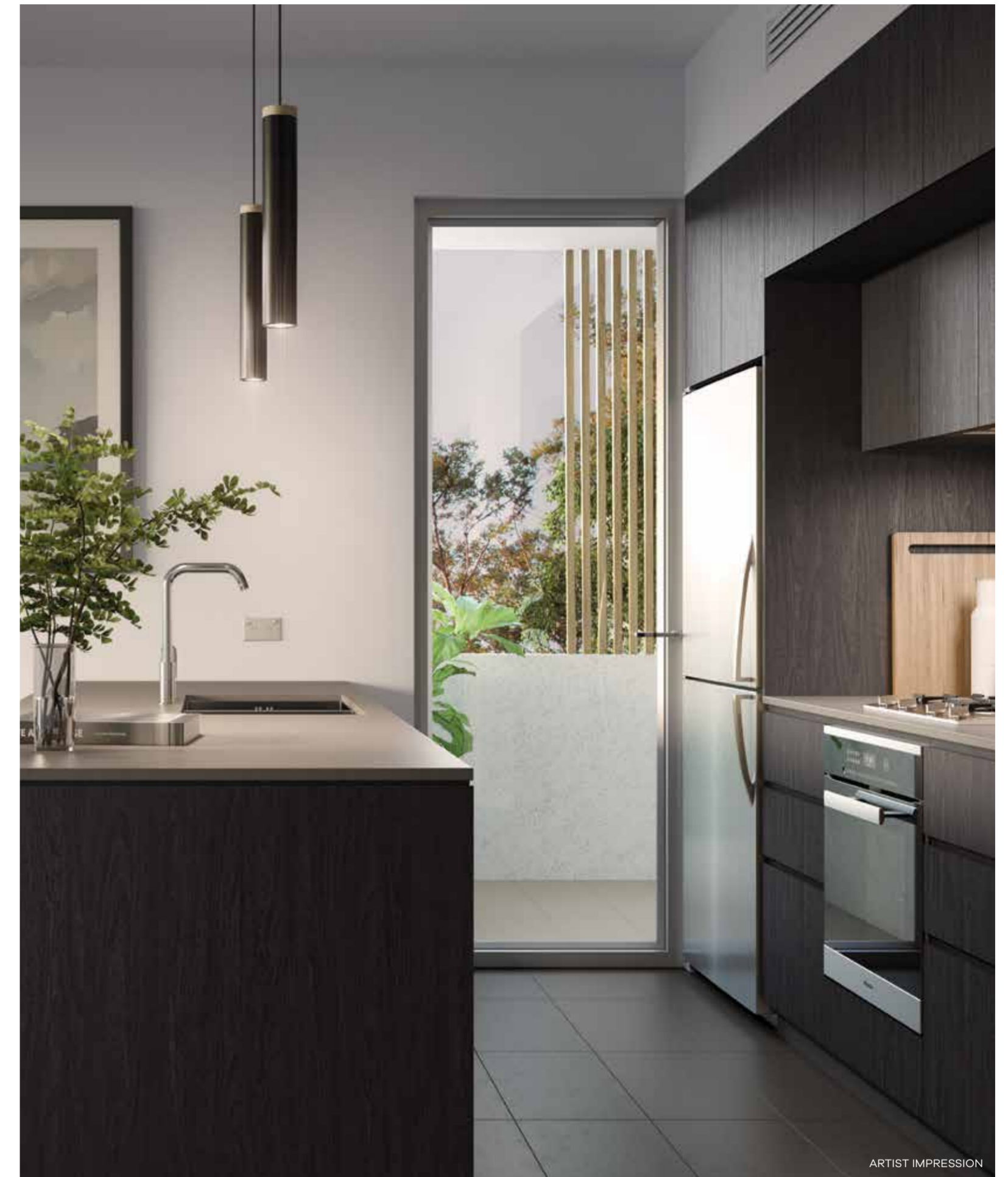
Nestled within flourishing landscaped parks and boulevards, your apartment is a celebration of subtropical living.

Where life just flows. In their naturally beautiful spot by the river, the apartments let the outdoors pour in. Light-filled spaces bring homegrown Queensland character into a modern context with spacious living and balcony areas, cross breezes and generous north-facing windows to take in the sun and lush green views.

Open layouts maximise the garden vistas and amplify the sense of space. Shady spaces reduce urban heat while airy windows and balconies make for cool, comfortable days and nights. Designed as urban riverside sanctuaries, the apartments are an uplifting retreat from the village precinct buzz below.



ARTIST IMPRESSION



Modern kitchens are designed to inspire you. Featuring cool stone benchtops, chrome tapware, European appliances and striking lighting, each kitchen balances eat-in practicality with open-plan urban style. Thoughtful contemporary design, abundant essential storage and everyday simplicity abound. This is the working heart of your home, a superbly crafted and well-appointed space for sharing generously with family and friends.





ARTIST IMPRESSION





Your home, like your life, must be special. Your Green Terrace is a modern classic.

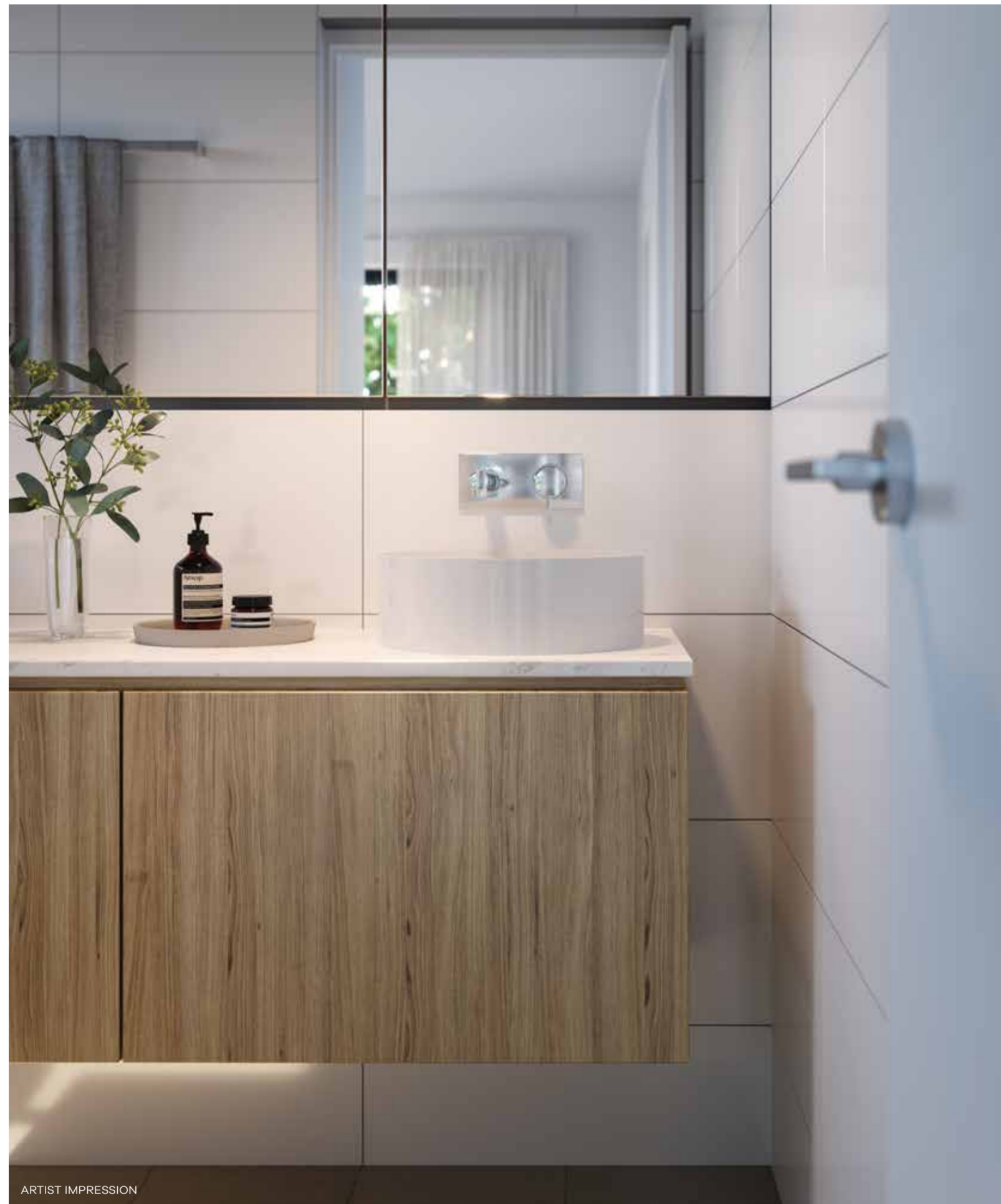
Green Terraces offer a limited selection of ten luxury three-bedroom homes that strike the perfect balance between private space and connected living. With a basement carpark, private internal lift and living areas spread out over two upper levels, these terraces offer more than enough space to stretch out and grow.

They include front and rear courtyards for seamless indoor-outdoor living, plus a multi-purpose room for versatility. Direct connections to the Ashley Cooper Riverwalk put all Yeerongpilly Green's active options, social spaces and vibrant village centre amenities in easy reach.

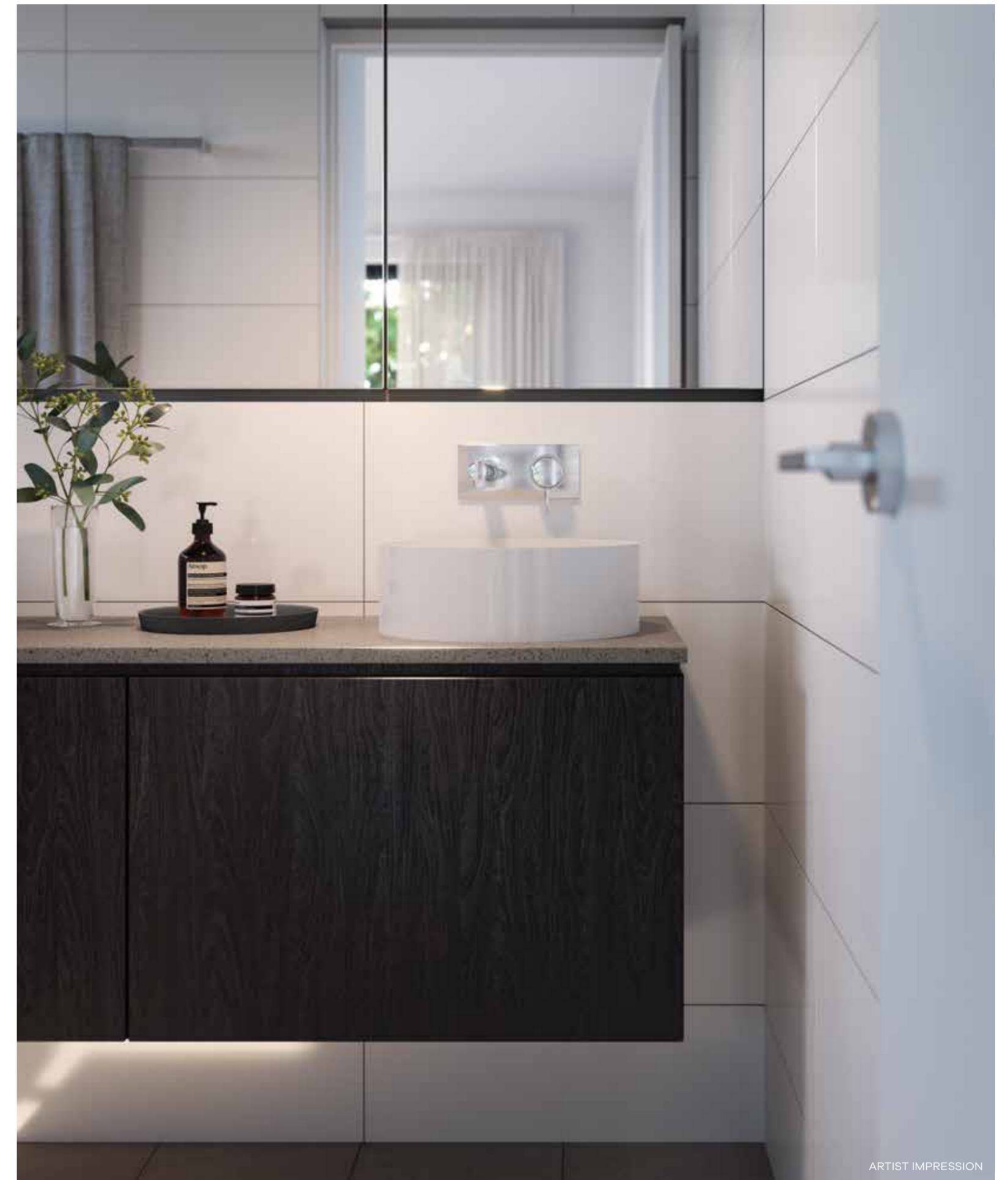
Modern elegance to fit every lifestyle.



ARTIST IMPRESSION



ARTIST IMPRESSION



ARTIST IMPRESSION

Elegant bathrooms are indulgent spaces to refresh mind and body. The luxurious canvas of stone, tile and timber, accented with contemporary tapware and basins, is crafted with care. Two palettes take on the textures and tones of the garden and river landscapes with plentiful storage to accommodate all your essentials. Muted natural hues create a relaxed backdrop that easily adapts to your own sense of style.



ARTIST IMPRESSION





“The southside has not seen a project like this before – a home, retail and business precinct worth discovering.”

DON O’RORKE – CEO & CHAIRMAN
Consolidated Properties Group

Consolidated Properties Group

Consolidated Properties Group has a 40-year track record of developing high-quality, landmark residential, retail and commercial projects spanning Australia’s Eastern Seaboard and beyond. The privately owned company has delivered over 200 projects valued in excess of \$3 billion and is at the forefront of creating places where people love to live, work, shop and play. These developments are all characterised by exceptional design, uncompromising quality and on time / on budget delivery.



Hutchinson Builders

Hutchinson Builders is Australia’s largest privately owned construction company. For 25 years, they have successfully delivered projects for Consolidated Properties Group. From early Brisbane beginnings, Hutchies has grown into a dynamic and diverse construction company, delivering sophisticated projects across a comprehensive portfolio and are a ‘safe pair of hands’. Hutchies has a demonstrated building capability and \$330M+ strong balance sheet



CVS Lane Capital Partners

CVS Lane Capital Partners is a specialist property finance and investment company. They work with a national network of property and investor clients to build long-term relationships and trusted partnerships, and are a joint venture partner in Yeerongpilly Green.



Your
next move.

ygriverside.com.au
1300 855 460



Disclaimer: Whilst care has been taken to ensure that all representations are accurate at the date of publication, Consolidated Properties Group and its related entities and agents do not warrant their accuracy. The plans/renders contained herein are conceptual/indicative only. Areas and dimensions subject to survey. Floor plans subject to change without notice (including any concept or design based element). Purchasers should make their own enquiries and obtain independent professional advice relevant to their particular circumstances. Details correct at time of printing.

